



www.ami-control.com



Multicolored LEDs



PANEL'PC BUS ALARM CENTRALIZATION

PANEL'PC is a TECHNICAL ALARM management system using a BUS that integrates operator-assisted capacities and history with file storage on a USB key.



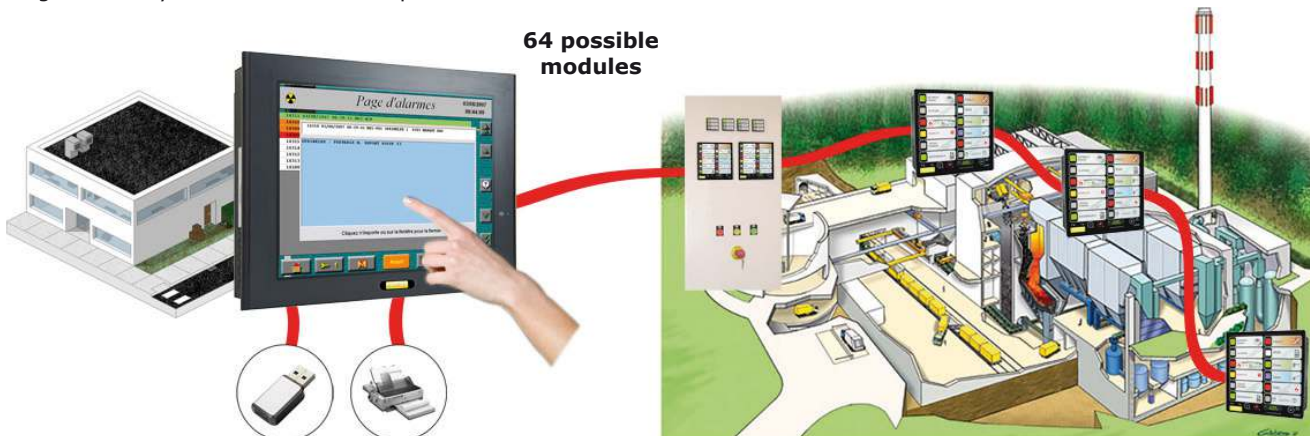
PANEL'PC



The PANEL'PC is the logical evolution of an installation equipped of panels alarms of type J3000/J3105 or J3500 in local area. It allows centralization and management of remote alarms, using the J3000/J3105 and J3500 as intelligent interfaces. Security : The PANEL'PC only repatriate alarm information present in the J3000/J3105/J3500 interfaces. In case of communication loss, the local panels will continue to perform their function and thus manage alarms locally. Speed : The detections and alarm treatments are performed by each of the J3000/J3105/J3500 present on the BUS. The PANEL'PC makes a statement cyclical of new states in each of them. It is a multitasking system. This results in a minimum time of treatment.

COMPLETE CENTRALIZATION OF TECHNICAL FAULTS :

- PANEL'PC is an alarm centralizing system on a RS485 BUS. It can manage 64 12-alarm offset modules or input/output modules. Its touch screen facilitates the carrying out of all operations with an additional keyboard (operator assistance, history and filing). It sends despatches or transfers to other sub-stations). It can be used either in a sub-station or control room.
- In the front of a local cabinet for monitoring alarms and local conditions, with history for traceability.
- In a control room with clustering by offset local alarm bus from local alarm panels.
- Using the facility for transfer to other possible sub-stations.



SPECIFICATIONS :

- PANEL'PC integrates:
- Alarm display with screen cancellation.
 - Operator assistance or instructions for each track indicating to the operator the procedure to follow in relation to the present alarm.
 - Display of history periods.
 - Re-display of histories of a recorded period (possible 10 000 pages).
 - Printing in continuous with time stamping.
 - Remote alarm reporting to one or several subscribers by BUS (for example, guard post, technical service, control room).
 - Possible remote control outputs.
 - Archiving on USB key.
 - Several security levels.

OPERATORS MENUS :



PANEL'PC has a touch screen and thus does not need a keyboard.

Automatic display of alarm page. It is possible to display operator assistance that gives information on how to proceed according to displayed track.

Consultable history on PANEL'PC screen or at another station.

Hierarchical access code system to protect some functions.



SETUP MENUS :

All menus are intuitive using easy-to-use touch screens. A «General Menu» page gives access to the other sub-menus.

«Access code» screen :

Various hierarchical levels, with operator name and personal code.

Alarm screen :

Each channel in input mode can be parameterized in multiple ways :

- With screen appearance.
- With cancellation.
- By printing.
- With history storage.

It is possible to associate specific operator assistance or INSTRUCTIONS with each channel.

The «Mirror» function or report despatches alarms, including in synthesis mode, to post clusters (including guard posts, local technical services or technical surveillance and control rooms). Instructions or «operator assistance» modes can be created at any time.

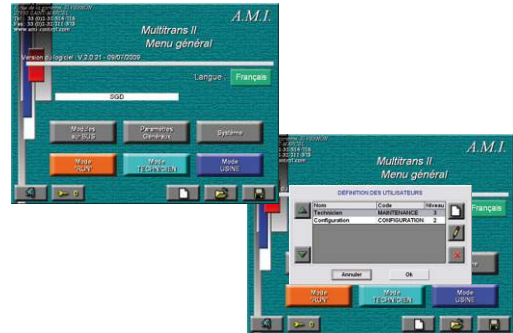
It is possible to carry out parameterization on another station and load it subsequently to the PANEL'PC.

Upgrading :

A software upgrading system is included. From any new start-up, the PANEL'PC will load any new program in the USB key.

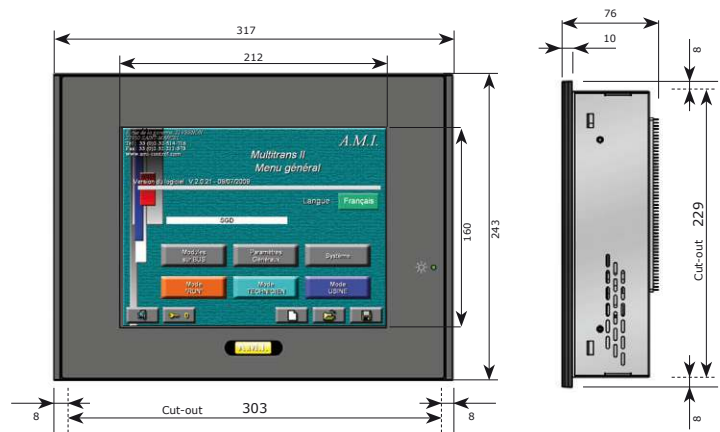
Included maintenance menu :

The USB key uses data or parameterization on another station, without stopping current PANEL'PC use.



CHARACTERISTICS :

Power supply	24Vdc ou 230Vac
Temperature rated	0°C / +50°C
Temperature storage	-20°C / +60°C
Humidity	20% à 90%
Front protection	IP65
Rear protection	IP22
Dimensions :	
L x l x p	317 x 243 x 76 mm
cut-out	229 x 303 mm
Weight	5,5kg



Equipment supplied :

- PANEL'PC with factory settings.
- USB key with program.
- Additional loudspeaker.

Option :

The AUDIO AMPLI KIT allows you to add a sound option to your alarms of PANEL'PC, the PANEL'PC does not have a speaker.

The AUDIO AMPLI KIT consists of two parts, an amplifier that can be mounted on a DIN rail, and a waterproof loudspeaker that fits into a cabinet or control panel.

The amplifier allows you to modulate the sound volume according to your environment.

Réf. : G0500-02-05

